

*Sulfur and Halogen analysis of liquid samples
Fast, Accurate and High sensitivity*

Official testing methods

ASTM: D7359, D7994, D8150 / UOP: 991, 1001



Automatic Quick Furnace for
Combustion Ion Chromatography

AQF-5000V

Vertical Furnace Model

Nittoseiko Analytech Co.,Ltd.

AQF-5000V

AQF-5000V is ideal for the pretreatment of liquid samples for sulfur and halogen analysis. It enables safe and high-volume combustion of liquid samples.

Features

FIRST

No boat program required, and fully automatic sample injection of liquid sample.

ACCURATE

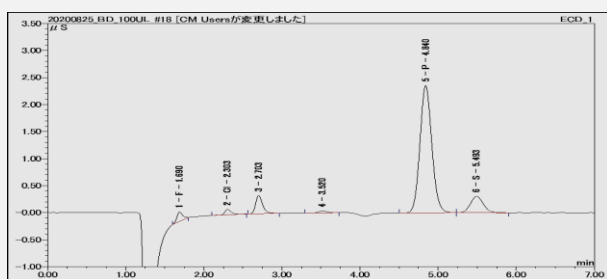
Much lower system blank, since direct sample injection to the heater furnace.

HIGH SENSITIVITY

Detects concentrations below 1 ppm by processing large volumes of liquid samples through sequential combustion. Safe combustion for everyone — no program needed, just inject liquid samples slowly.

Application

Examples of analysis of Biodiesel liquid



Element	Content (ppm)
F	2.2
Cl	2.1
P (Internal Standard)	-
S	7.0

Absorbent: 90 ppm H₂O₂ aq (Internal Standard 2 ppm Phosphate)

System Configuration

Automatic Liquid Sampler ASC-550L



Gas Absorption Unit
GA-500

Vertical Furnace
VF-500

Specifications

Automatic Quick Furnace AQF-5000V	
Target Sample	Liquid samples (gas samples require a gas injector)
Electric Furnace	Open-type electric furnace; dual-section method
Gas Used	Argon (purity 99.98% or higher, 0.3 ± 0.1 MPa) Oxygen (purity 99.7% or higher, 0.3 ± 0.1 MPa)
Power Supply & Consumption	100/115/230/240 VAC, 50/60 Hz, 1000 VA
Dimensions & Weight	Approx. W320 × D430 × H500 mm, approx. 25 kg

Automatic Liquid Sampler ASC-550L	
Injection Method	Gas-tight microsyringe (capacities: 25, 50, 100, 250 µL)
Sample Container	Vial with septum (2/4/6 mL capacity)
Number of Sample Vials	50 (2/4/6 mL) or 105 (2 mL)
Power Supply & Consumption	100/115/230/240 VAC, 50/60 Hz, 180 VA
Dimensions & Weight	Approx. W460 × D320 × H470 mm, approx. 16 kg

Manufactured by

Nittoseiko Analytech Co., Ltd.
7-10-1 Chuo-rinkan, Yamato, Kanagawa, JAPAN
URL: <https://www.n-analytech.co.jp/global/>

Distributed by

Instru | INSTRUMENTACIÓN
ANALÍTICA